

# PRODUCT DATASHEET - INTELLIGENT SOUNDER INTERFACE MODULE



## INTELLI-SENSE

Addressable Device

TI-002260

### DESCRIPTION

The TI-002260 Intelligent sounder Interface module is designed for use with the CFX-Plus range of modular wall sounders and beacons. When either the conventional sounder or sounder beacon are fitted with this module they can then be installed directly onto "fully digital communication protocol intelligent loop.

Once installed on to an Intelli-Sense compatible loop the device is fully addressable and benefits from an extensive range of intelligent control and monitoring functionality.

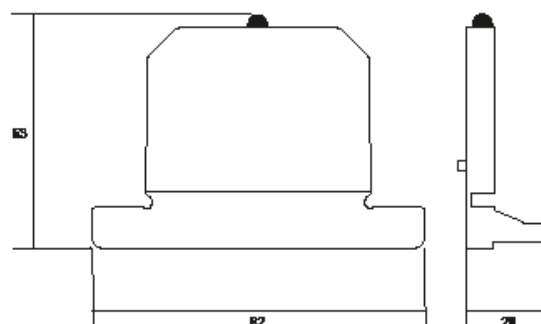
### KEY FEATURES

- Flexible Modular Design
- Approved by LPCB to EN 54-17 and EN 54-18
- Built in short circuit loop isolation
- Intelligent two stage alarm capability
- Fits CFX-Plus modular wall sounders and Sounder Beacons
- Easy to install
- Manual and Auto addressing options
- Optional Microphone self test facility
- Auto and Manual address options

### TECHNICAL SPECIFICATION

Power supply voltage range	18Vdc – 40Vdc
Activated current load: (High Vol. Inc. Sounder)	5-8 mA at 24 Vdc
(High Vol. Inc. Sounder Beacon)	11-25mA at 24 Vdc
Loop Protocol	Fully Digital Communication Protocol
Operating Temperature Range	-25°C to +70°C
Unit weight (inc Back box)	290g
Max tolerated humidity (non condensing)	85% RH
Compatible Sounder Units	TI-002272 & TI-002273

### TECHNICAL INFORMATION



### STANDARDS AND APPROVAL

BS EN 54-18:2005	Input/Output devices
BS EN 54-17:2005	Short Circuit Isolators



Call: 1800 120 3473 / +91 9540 666 666  
/ +91 120 4223473

Visit our website: [ceasefire.in](http://ceasefire.in)

Email: [response@ceasefire.in](mailto:response@ceasefire.in)

**Ceasefire Industries Pvt. Ltd.**

Plot No. 4, Second Floor, Sector-135,  
Noida - Greater Noida Expressway,  
Noida - 201 301, Uttar Pradesh [India]